



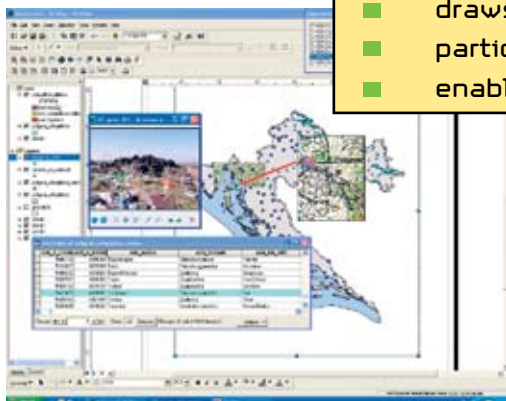
CROATIAN
ENVIRONMENT AGENCY

for better waste management



CROATIAN ENVIRONMENT AGENCY

- collects and integrates waste data
- maintains Waste Management Information System
- develops and sets up indicators for monitoring in waste management sector
- draws up reports on for monitoring in waste management sector
- participates in EIONET - European information network
- enables and facilitates waste information accessibility



Data Collecting, Integration and Processing

CEA collects data on quantities and streams of municipal, non-hazardous and hazardous waste, data on waste disposal facilities, waste management licences, transboundary movement of waste, data on regulations, projects and other data relevant for the waste management sector.

Waste Management Information System

CEA maintains the Waste Management Information System as an integral part of the Environmental Information System which enables and facilitates access to information to all stakeholders and general population. It contains the Waste Register databases (within the Environmental Emission Register, EER/Waste), database on licences, GIS register of landfills and other records and databases.

Indicators for monitoring in waste management sector

CEA determines and prepares indicators for monitoring of state in the waste management sector which might be used for assessment of measures implemented in order to improve the waste management.

Reporting on monitoring in waste management sector

CEA is preparing annual review of data from the databases maintained by the Agency, prepares periodical reports on the state in the sector, participates in drawing up of international and pan-European reports on waste management sector and makes data and information available upon request or by posting them on the web site.

Participation in EIONET

CEA participates in EIONET - European information network of the European Environment Agency (EEA), prepares and submits data into the Central Data Repository (CDR) and participates in data exchange in other ways. It collaborates with The European Topic Centre on Resource and Waste Management (ETC/RWM).

Waste Data Accessibility

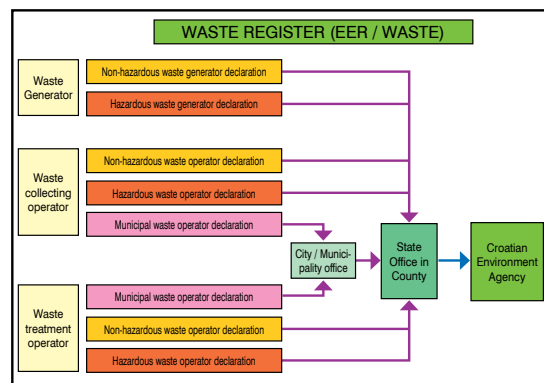
All waste data available from the Agency are stipulated in the CEA Information Catalogue. The data are accessible at the www.azo.hr site or may be requested through an information access form.



WASTE MANAGEMENT INFORMATION SYSTEM

Waste Register (EER/waste)

The Waste Register contains data on quantities of generated, collected and treated waste by waste types. Waste generators and licensed operators are obliged to submit filled out forms on quantities and types of waste generated or managed on an annual basis. Data on municipal, non-hazardous and hazardous waste generated are collected on a regional level (counties) by relevant offices and forwarded to the Croatian Environmental Agency that prepares integrated data.



Waste Management Licence Register

CEA maintains a Register on hazardous waste management licences issued by the Ministry of Environmental Protection, Physical Planning and Construction and on licences for non-hazardous and municipal waste management issued by relevant offices in counties.

Landfill Inventory

CEA maintains a georeferenced (GIS) database on the existing landfills. The database contains landfill polygons, photograph base, and numerous relevant data on each landfill site such as: general data, operator contact, surface area, landfilled waste quantity, waste origin, waste types, status of licences, equipment availability, environmental protection measures implemented at the site, site characteristics, pollution, landfill state monitoring, etc. The base is accessible from www.azo.hr. GIS tools are used for browsing and map displays.

Waste Management Plans

CEA administers all the waste management plans, which are prepared by municipalities, cities and counties. The waste management plans are prepared by persons and entities generating over 200 kg of hazardous waste or 150 tonne of non-hazardous process waste a year.

Laboratories

CEA maintains data on laboratories analysing physical and chemical characteristics of waste.

Hazardous Waste Declarations

CEA keeps the data from the Hazardous Waste Declarations filled out by the waste generators and waste collection and treatment operators for each waste transfer.

Transboundary Waste Movement Data

CEA prepares integrated data on transboundary movement of hazardous and non-hazardous waste obtained from licenses granted and reports prepared by the waste exporters on their business activities.

Contact

Croatian Environment Agency
Trg Maršala Tita 8
10000 Zagreb
Croatia
Phone ++ 385 1 488 68 40
Fax ++ 385 1 488 68 50
e-mail: info@azo.hr
url: www.azo.hr

